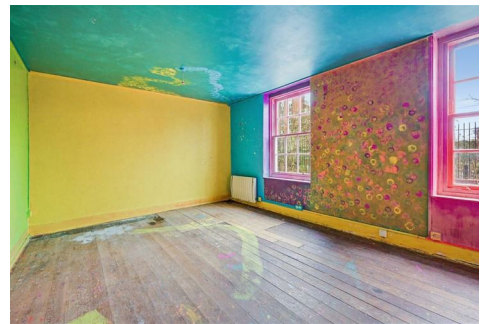


MATTHEW JAMES

Residential Sales • Lettings • Management



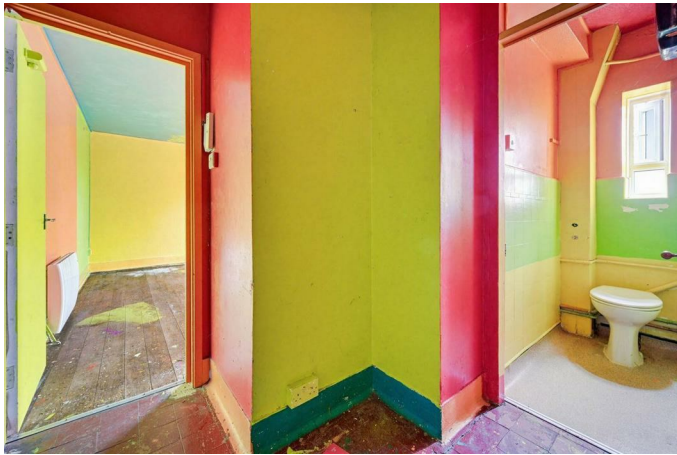
York Rise, Dartmouth Park, NW5 1DP

Asking Price £230,000

A rather colourful addition to Matthew James's sales stock is this ground floor purpose built studio flat located within the ever popular Dartmouth Park area and within close walking distance of Parliament Hill Fields and its large selection of amenities including a running track, lido, tennis courts and cafes all of which lead onto the wide open spaces of Hampstead Heath. Offered Chain Free. New 250 Year Lease. Mixed Tenure Block.

Ground Floor Entrance

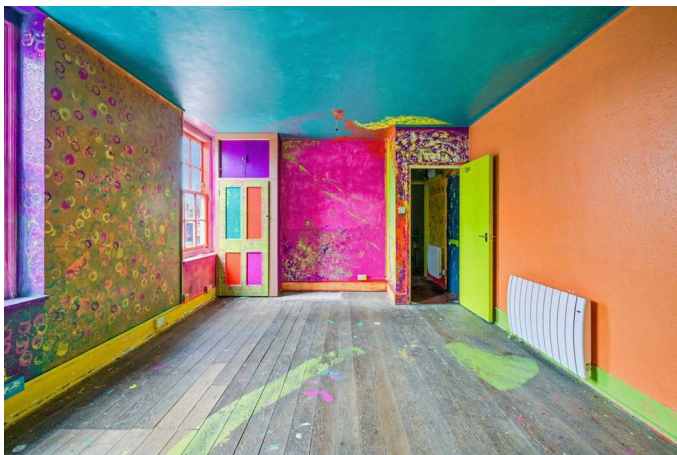
Hallway



Shower Room



Studio Room



W.C.

Additional Information

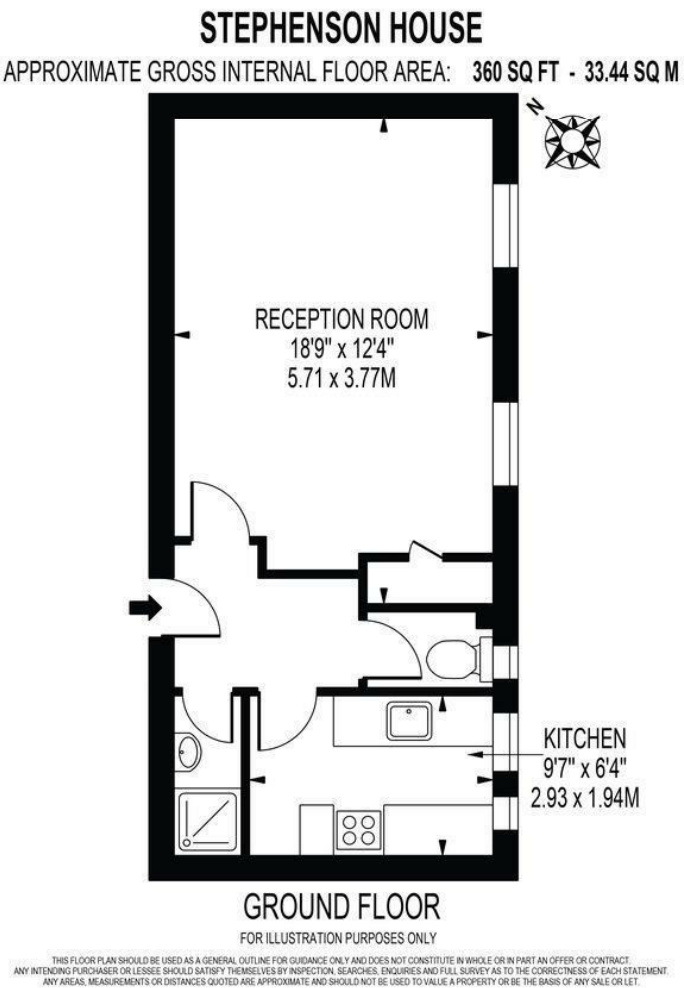


Kitchen

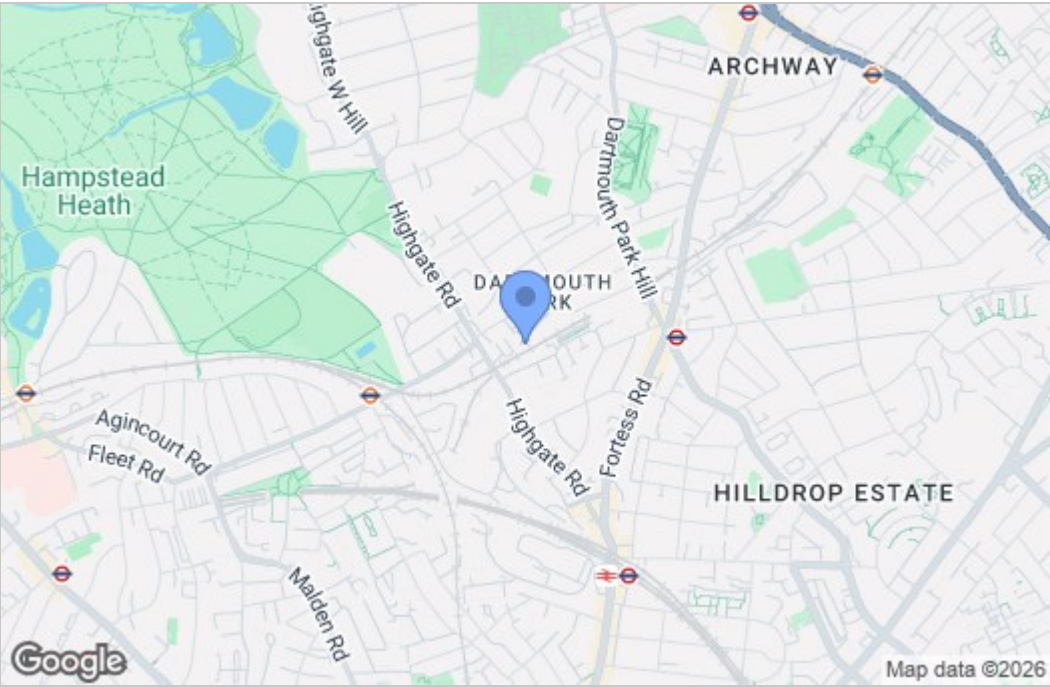


New 250 Year Lease
Service Charge T.B.A.
No Ground Rent
Camden Council Tax Band B

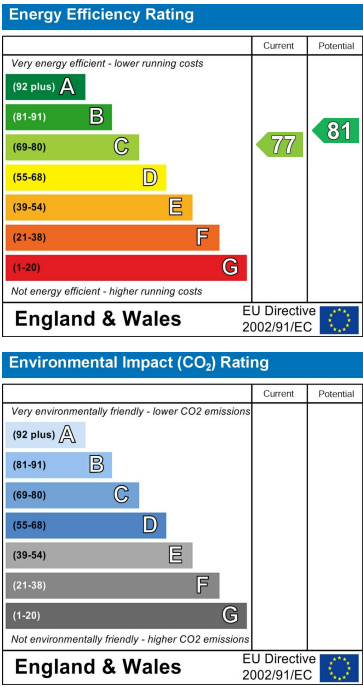
Floor Plan



Area Map



Energy Efficiency Graph



These particulars, whilst believed to be accurate are set out as a general outline only for guidance and do not constitute any part of an offer or contract. Intending purchasers should not rely on them as statements of representation of fact, but must satisfy themselves by inspection or otherwise as to their accuracy. No person in this firms employment has the authority to make or give any representation or warranty in respect of the property.